

Řada SPX Industrial 2280 / 2281 Series

Smart General Purpose Pressure Sensors

Description

The Dynisco SPX228X is an all welded construction smart industrial 4-20mA pressure transmitter designed for use in hazardous locations. Models are available in PSIG, PSIA, and PSIS. Optional pressure fittings and electrical terminations are available.

Features

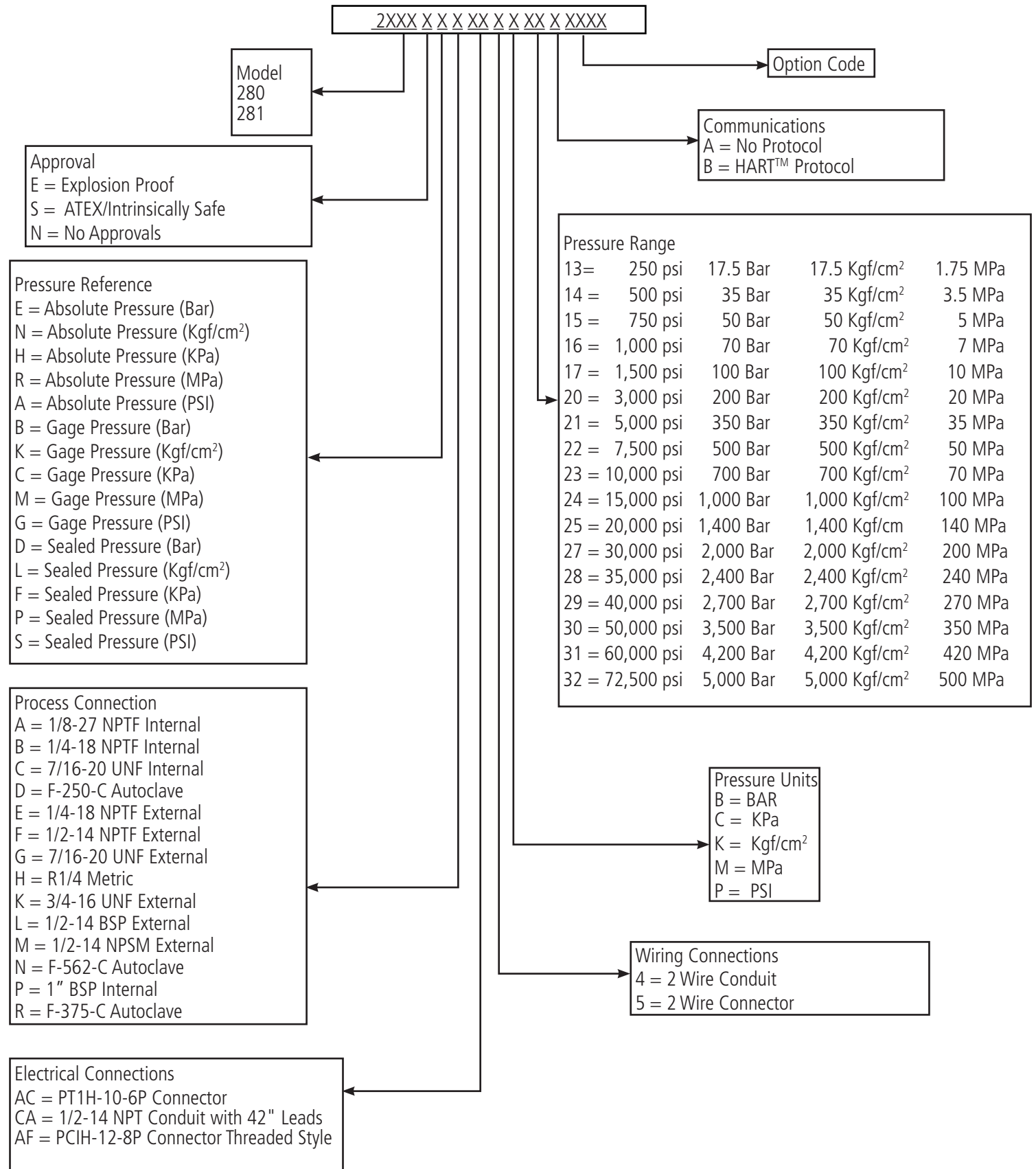
- 4-20mA loop-powered output
- +/- 0.25% accuracy available
- Wide selection of pressure ranges available
- Turndown 3:1
- Configurations available for use in hazardous locations
- Remotely configurable via HART™
- Precise, repeatable pressure measurements
- Output supplied directly to DSC or PLC
- Meets CE requirements
- CE ATEX Intrinsically Safe Approved
- FM Explosion Proof Approved
- CSA Explosion Proof Approved
- SIL 2 Certified (Pressure Output)
- PL'c' Certified (Relay Output)
- Additional approvals are available



Performance Characteristics SPX2280 & SPX2281	
Output	4 - 20 mA, with optional HART™
Input Voltage	16 - 36 Vdc (Std); 16 - 30 Vdc (ATEX IS)
Accuracy	2280 ± 0.5% 2281 ± 0.25%
<small>Accuracy is defined as the combined error expressed as a percentage of full scale output with the specifications of: Electronics ambient temperature, capillary of <= 36"; DyMax coated 15-5 SST diaphragm; Best Straight Line (BSL) %FS, per ISA-37.1 Consult Factory for availability and specifications of other configurations.</small>	
Repeatability	±0.1%
Rangeability	3:1 Turndown
Over Pressure	1.5 x FSO; 250 - 30,000 psi 1.2 x FSO; 35,000-72,500 psi
Zero Balance Adjustment Range	±5% FSO Maximum
Load Resistance	500 Ω @ 24 Vdc, 1,000 Ω @ 36 Vdc
Electronics Ambient Temperature	70°F (20°C)
Operating Temperature	-20 to 185°F (-29 to 85°C)
Compenstated Temperature Range	0 to 150°F (-18 to 65°C)
Span Shift (Temp Change)	All Models: 0.02% F.S./°F max (0.04% F.S./°C max)
Zero Shift (Temp Change)	All Models: 0.01% F.S./°F max (0.02% F.S./°C max)
Burst Pressure	250 psi: 10 X FSO 500 - 3,000 psi: 5 X FSO 5,000 - 10,000 psi: 3 X FSO 15,000 - 30,000 psi: 2.5 X FSO 40, 000 - 72,500 psi: 1.5 X FS

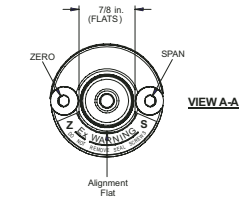
Mechanical Characteristics	
Standard Wetted Parts	15-5 PH & 17-4 PH SST
Approvals & Certifications	
CE ATEX IS	
SIL 2 (pressure output) & PL'c' (relay output)	
FM & CSA Explosion Proof	
Additional Approvals are Available	

Ordering Guide for Models SPX2280 & SPX2281¹



¹ Other configurations are available. Please consult factory.

Drawing SPX2280

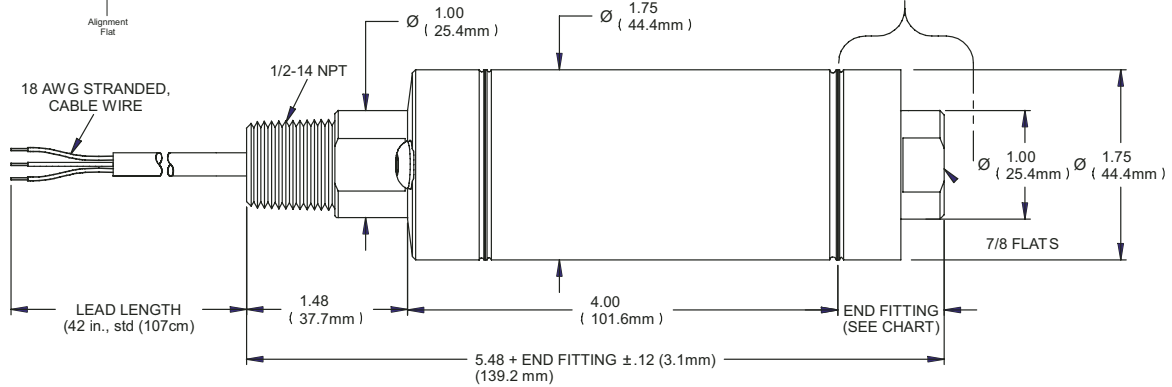


Cable Wiring		
Color	Function	
RED	E+	
BLACK	E-	
GREEN	GROUND	
ORANGE	Rel +	
BLUE	Rel -	

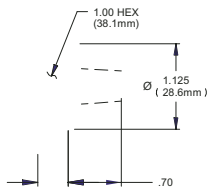
- A Ftg = 5 - 20,000 PSIG
- B Ftg = 5 - 20,000 PSIG
- C Ftg = 5 - 10,000 PSIG
- D Ftg = 5 - 60,000 PSIG
- Where; -R Ftg = 5 - 60,000 PSIG

Fitting - R (and Fittings A thru D)

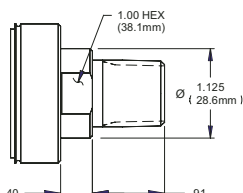
(PRESSURE LISTED ABOVE)



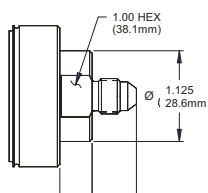
Fitting - E
(5-10,000 PSIG)



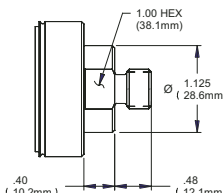
Fitting - F
(5-10,000 PSIG)



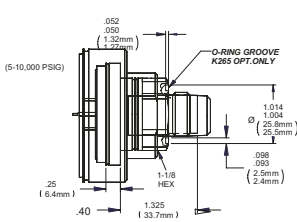
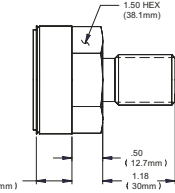
Fitting - G
(5-7,500 PSIG)



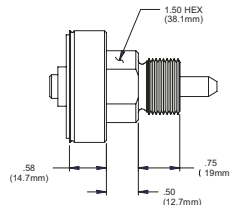
Fitting - H
(5-10,000 PSIG)



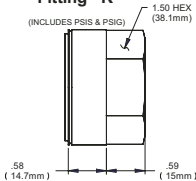
Fitting - L
(1,000- 40,000 PSIG)



Fitting - M
(1,000- 60,000 PSIG)

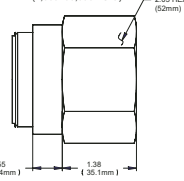


Fitting - N
(1,000- 60,000 PSIG)



Fitting - K
(INCLUDES PSIS & PSIG)

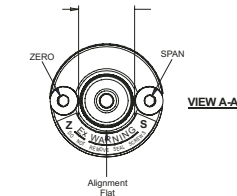
Fitting - P
(1,000- 30,000 PSIG)



Pressure Fitting Quick Reference

Suffix	DESCRIPTION	TYPE
-- A	1/8-27 NPTF	INT. Thread
-- B	1/4-18 NPTF	
-- C	MS33649-4	
-- D	F-250-C	Conduit ftg
-- E	1/4-18 NPTF	
-- F	1/2-14 NPTF	EXT. Thread
-- G	MS33656-4	
-- H	R 1/4	
-- K	3/4-16 UNF	EXT. Thread
-- L	1/2-14 BSP	
-- M	1/2-14 NPSM	INT. Thread
-- N	F-562-C	
-- P	1" BSP	
-- R	F-375-C	

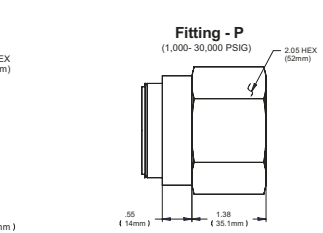
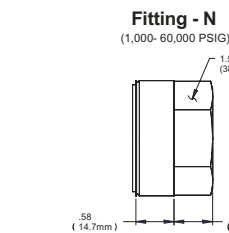
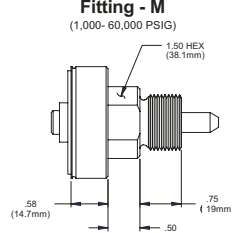
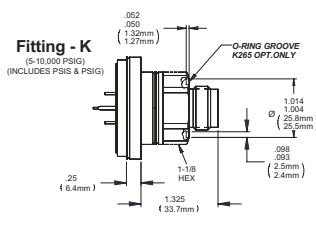
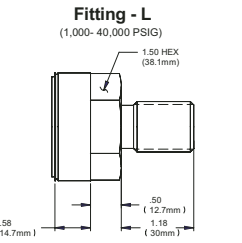
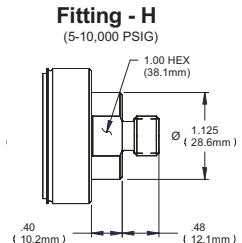
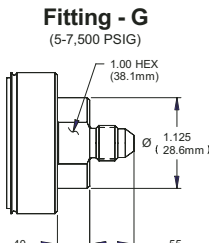
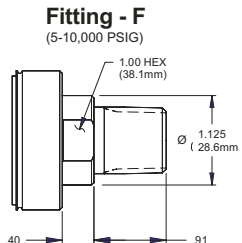
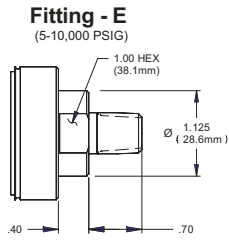
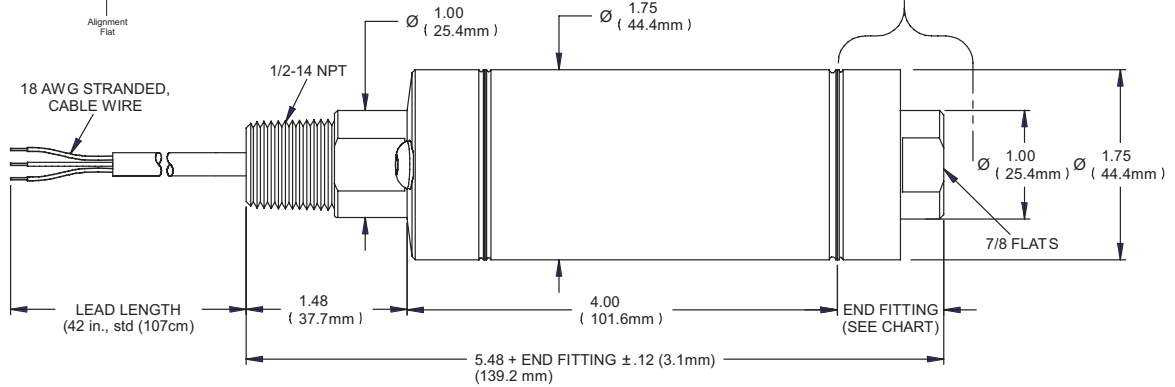
Drawing SPX2281



3 - Conductor	RED	E+
	BLACK	E-
5 - Conductor	GREEN	GROUND
	ORANGE	Rel+*
	BLUE	Rel-*

-A Ftg = 5 - 20,000 PSIG
 -B Ftg = 5 - 20,000 PSIG
 -C Ftg = 5 - 10,000 PSIG
 -D Ftg = 5 - 60,000 PSIG
 Where: -R Ftg = 5 - 60,000 PSIG

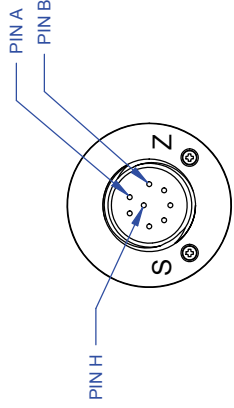
Fitting - R (and Fittings A thru D) (PRESSURE LISTED ABOVE)



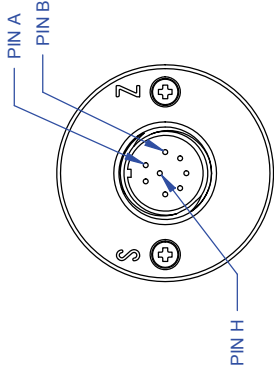
Pressure Fitting Quick Reference		
Suffix	DESCRIPTION	TYPE
-- A	1/8-27 NPTF	INT. Thread
-- B	1/4-18 NPTF	
-- C	MS33649-4	
-- D	F-250-C	
-- E	1/4-18 NPTF	Conduit fgt
-- F	1/2-14 NPTF	
-- G	MS33656-4	
-- H	R 1/4	EXT. Thread
-- K	3/4-16 UNF	
-- L	1/2-14 BSP	
-- M	1/2-14 NPSM	
-- N	F-562-C	INT. Thread
-- P	1" BSP	
-- R	F-375-C	

REV	ECO	BY	APP	DATE
A	46553	TP	LEB	07/29/16 R

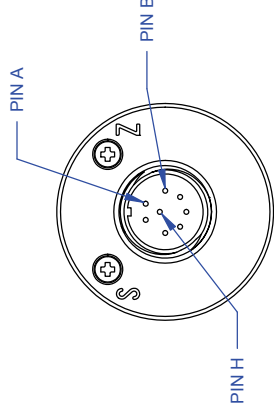
000652



8 - PIN PC
O-RING WITH PUSH BUTTONS
PCIH-12-8P



8 - PIN PC
WELDED WITH PUSH BUTTONS
PCIH-12-8P



8 - PIN PC
WELDED WITH HALLS
PCIH-12-8P

GUARDIAN CONNECTOR WIRING	
PIN	FUNCTION
A	POWER +
B	SIGNAL -
C	POWER -
D	NO CONNECTION
E	Rcal -
F	Rcal +
G	RELAY CONTACT
H	RELAY CONTACT

NOTE:
1. THESE CONNECTOR OPTIONS ARE AVAILABLE ON MOST OF THE CONFIGURATIONS SHOWN ON THE PREVIOUS SHEETS.

TOLERANCES UNLESS OTHERWISE SPECIFIED:
 1. DIMENSIONS IN PARENTHESES
 2. PLACE DECIMAL ± .005
 3. FRACTIONS ± 1/32
 4. DRILLS < 0.5 DIA. ± .002 > 0.5 DIA. ± .003
 5. ANGLES ± 0.5° MAX.
 6. EDGES R .006 OR CHAMFER MAX
 7. PART TO BE FREE OF BURRS
 8. ALL DIMENSIONS ARE IN INCHES.

TITLE		DATE	
GUARDIAN SERIES CONNECTORS		TP	7/27/16
DRAWN	CHECKED	DATE	DATE
LEB	LEB	7/27/16	7/27/16
APPROVED	APPROVED		
FINISH	FINISH	63 ✓	

EXCEPT AS MAY BE OTHERWISE PROVIDED BY CONTRACT, THESE DRAWINGS AND SPECIFICATIONS ARE THE PROPERTY OF DYNISCO. ANY REPRODUCTION, REPRODUCTION OR USE AS THE BASIS FOR THE MANUFACTURE OR SALE OF APPARATUS WITHOUT PERMISSION.



SIZE	DWG. NO.	REV
B	000652	A
SCALE	NONE	SHEET 1 OF 1



Azurr-Technology, s.r.o.

Dolní Bečva 579 Tel.: +420 571 647 228
756 55 Tel.: +420 571 647 310
Česká republika Email: info@azurr-tech.cz
www.azurr-tech.cz



Všechny rozměry jsou uvedeny v palcích (mm), pokud není uvedeno jinak. © 2016.
Společnost Dynisco si vyhrazuje právo provádět změny bez předchozího upozornění.
Přístupy k dokumentům jako jsou návody k obsluze a jiné podpůrné dokumenty
naleznete na www.dynisco.com
Rev:1216